

PROJECT:		PREPARED BY:	
PART #		QTY:	
NOTES:		DATE:	

**GL Series PERMANENT HOLIDAY LIGHTING**

# Intelligent Controller

**PRODUCT DESCRIPTION:**

LED smart controller is a powerful and used to control the brightness, color and mode of LED lights to achieve a variety of lighting and display effects.

**PRODUCT FEATURES:**

Support iOS and Android systems, WiFi and Bluetooth dual-channel connection, with dimming, color mixing mode switching, music mode, voice control, custom mode, timing, device sharing and other features that enable users to customize the brightness, color and mode of LED lights according to their needs, creating a rich and diverse lighting and display effects.

**UL US**  
LISTED  
E183/182  
GLMD901

**FC**  
2A7ZD-  
GLMD901

**CE**



**2023 WiFi Intelligent Controller**



**2023 WiFi Intelligent Controller - MINI**



**WLED**



**44-Key Bluetooth Controller**

## LED Permanent Light Series

**OEM/ODM**



**GLMD135**

LED Quantity: SK6812RGBW  
Power: 0.5W/pcs  
Voltage(v): DC 12V  
IC type: SK6812  
IP Rank: IP68  
Size(mm):  $\Phi 23 \times 9.5$ MM  
Size of mounting hole:  $\Phi 20$ MM  
Color: RGBW Chasing light  
Notes: 10pcs/String



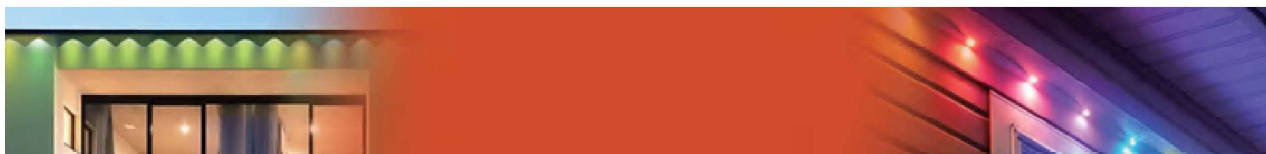
**GLMD175**

LED Quantity: 1PCS LED Plug-ins  
Power: 0.75W  
Voltage(v): DC 12V  
IC type: WS2811  
IP Rank: IP68  
Size(mm):  $\Phi 12 \times 35$ MM  
Size of mounting hole:  $\Phi 12$ MM  
Color: RGB Chasing light  
Notes: 50 pcs/String



**GLMD176-RGB-2811**

LED Quantity: 3pcs SMD5050  
Power: 0.72W  
Voltage(v): DC 12V  
IC type: WS2811  
IP Rank: IP68  
Size(mm):  $42 \times 32 \times 15.5$ MM  
Size of mounting hole:  $\Phi 30$ MM  
Color: RGB Chasing light  
Notes: 1 / 5 / 10 pcs/String



PROJECT:		PREPARED BY:	
PART #		QTY:	
NOTES:		DATE:	

**GL Series PERMANENT HOLIDAY LIGHTING**



**GLMD176-RGBW**

LED Quantity:3pcs SMD5050  
Power:0.96W  
IC type:UCS2904  
Size(mm):42\*32\*15.5MM  
Size of mounting hole:Φ30MM

Voltage(v):DC12V  
IP Rank:IP68  
Color:RGBW Chasing light  
Notes:1 / 5 / 10 pcs/String



**GLMD176-RGBW-24V**

LED Quantity:3pcs SMD5050  
Power:1.44W  
IC type:UCS2904  
Size(mm):42\*32\*16MM  
Size of mounting hole:Φ30MM

Voltage(v):DC24V  
IP Rank:IP68  
Color:RGBW Chasing light  
Notes:1 / 5 / 10 pcs/String



**GLMD176-BZ**

LED Quantity:3pcs SMD5050  
Power:0.96W  
IC type:UCS2904  
Size(mm):Φ40\*40MM  
Size of mounting hole:Φ37MM  
Color:RGBW Chasing light

Voltage(v):DC12V  
IP Rank:IP68  
Notes:1000pcs/MOQ,  
1 / 5 / 10 tpcs/String



**GLMD177**

LED Quantity:SMD5050RGB  
Color:RGB Chasing light  
Power:1.44W  
IC type:UCS1903  
Size(mm):58\*66\*18.2MM  
Size of mounting hole:Φ50MM

Voltage(v):DC24V  
IP Rank:IP68  
Notes:1pcs/String ,  
5pcs/String ,10pcs/String



**GLMD177-RGBW**

LED Quantity:SMD5050RGBW  
Color:RGBW Chasing light  
Power:1.44W  
IC type:UCS2904  
Size(mm):58\*66\*18.2MM  
Size of mounting hole:Φ50MM

Voltage(v):DC24V  
IP Rank:IP68  
Notes:1pcs/String,  
5pcs/String ,10pcs/String



PROJECT:		PREPARED BY:	
PART #		QTY:	
NOTES:		DATE:	

**GL Series PERMANENT HOLIDAY LIGHTING**

**GLMD179**

LED Quantity:SMD5050RGBW  
 Power:2W  
 IC type:UCS512C2L  
 Size(mm):51\*40\*14.5MM  
 Size of mounting hole:Φ40MM  
 Color:RGBW  
 Notes:10pcs/String  
 Voltage(v):DC24V  
 IP Rank:IP67



**GLMD180**

LED Quantity:SMD5050RGBW  
 Power:2.5W  
 IC type:UCS512C2L  
 Size(mm):61\*50\*14.5MM  
 Size of mounting hole:Φ50MM  
 Color:RGBW  
 Notes:10pcs/String  
 Voltage(v):DC24V  
 IP Rank:IP67



**GLMD181**

LED Quantity:3PCS SMD5050 RGBW  
 Power:0.96W  
 IC type:UCS2904  
 Size(mm):G45\*92MM  
 Color:RGBW Chasing light  
 Notes:1pcs/String, 5pcs/String  
 Voltage(v):DC12V  
 IP Rank:IP65



**GLMD181-T**

LED Quantity:3PCS SMD5050 RGBW  
 Power:0.96W  
 IC type:UCS2904  
 Size(mm):G45\*H215MM  
 Color:RGBW Chasing light  
 Notes:15pcs/String/15M  
 Voltage(v):DC12V  
 IP Rank:IP65



PROJECT:		PREPARED BY:	
PART #		QTY:	
NOTES:		DATE:	

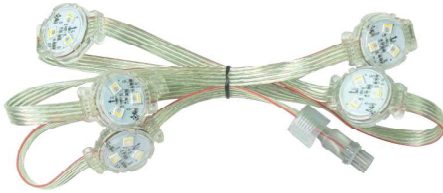
**GL Series PERMANENT HOLIDAY LIGHTING**



**GLMD181-T-H**

LED Quantity: LED filament  
Power: 0.7W  
Size(mm):  $\Phi 45 \times H240MM$   
Color: 2700K

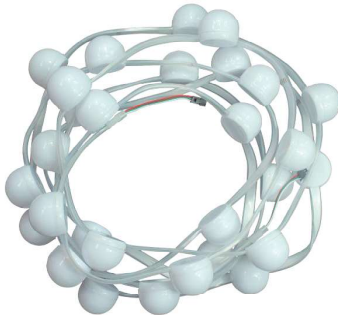
Voltage(v): 110/220V  
IP Rank: IP65  
Notes: 10pcs/String/5M



**GLMD182**

LED Quantity: SMD5054RGBW  
Power: 0.96W  
IC type: UCS512C2L  
Size(mm): 30\*30\*14.5MM  
Size of mounting hole:  $\Phi 30MM$   
Color: RGBW Chasing light

Voltage(v): DC24V  
IP Rank: IP68  
Notes: 1pcs/String, 5 pcs/String, 10pcs/String



**GLMD183**

LED Quantity: 6PCS/M  
Power: 0.72W  
IC type: SM16703  
Size(mm):  $\Phi 43MM$   
Color: RGB Chasing light

Voltage(v): DC12V  
IP Rank: IP67  
Notes: 30pcs/5M



**GLMD184**

LED Quantity: SMD3535RGBW  
Power: 1.2W  
IC type: UCS2904  
Size(mm):  $\Phi 50 \times 77MM$   
Color: RGBW Chasing light

Voltage(v): DC24V  
IP Rank: IP67  
Notes: 5pcs/M

**LED Curtain Lights**



LED Type: SMD4040  
Power: 0.05-0.15W/pcs  
IC type: WS2811  
Size(mm):  $\Phi 5 \times 12MM$   
Color: RGB

Voltage(v): DC5V  
IP Rank: IP65



PROJECT:		PREPARED BY:	
PART #		QTY:	
NOTES:		DATE:	

**GL Series PERMANENT HOLIDAY LIGHTING**

**GLMD190**

LED Quantity:SK6812 RGBW  
Power:0.5W  
IC type:SK6812RGBW  
Size(mm):Φ25X58MM  
Color:RGBW Chasing light

Voltage(v):DC12V  
IP Rank:IP68  
Notes:5pcs/strip



**GLMD191 (6 Lamp Beads)**

LED Quantity:6pcs smd3535  
RGB+3000K  
Power:1.44W  
IC type:UCS2904  
Size(mm):55.7\*31\*15.5MM  
Size of mounting hole:Φ25MM  
Color:RGBW Chasing light

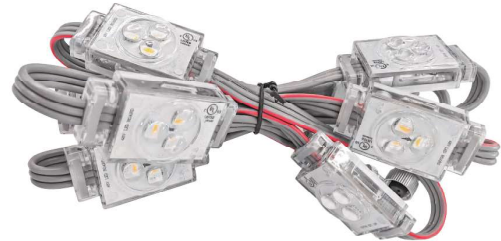
Voltage(v):DC48V  
IP Rank:IP68  
Notes:5pcs/strip



**GLMD191(3 Lamp Beads)**

LED Quantity:3PCS5050RGBW  
Power:1.44W  
IC type:UCS2904B  
Size(mm):G45\*92MM  
Color:RGBW Chasing light

Voltage(v):DC48V  
IP Rank:IP65  
Notes:1pcs/String,  
5pcs/String



**GLMD193**

LED Quantity:1pcs smd5054RGB  
Power:1.44W  
IC type:UCS1903  
Size(mm):42\*30.2\*16MM  
Size of mounting hole:Φ15MM  
Color:RGB Chasing light

Voltage(v):DC36V  
IP Rank:IP68  
Notes:5pcs/strip



**GLMD193-RGBW**

LED Quantity:1pcs smd5054  
RGBW  
Power:1.44W  
IC type:UCS2904  
Size(mm):42\*30.2\*16MM  
Size of mounting hole:Φ15MM  
Color:RGBW Chasing light

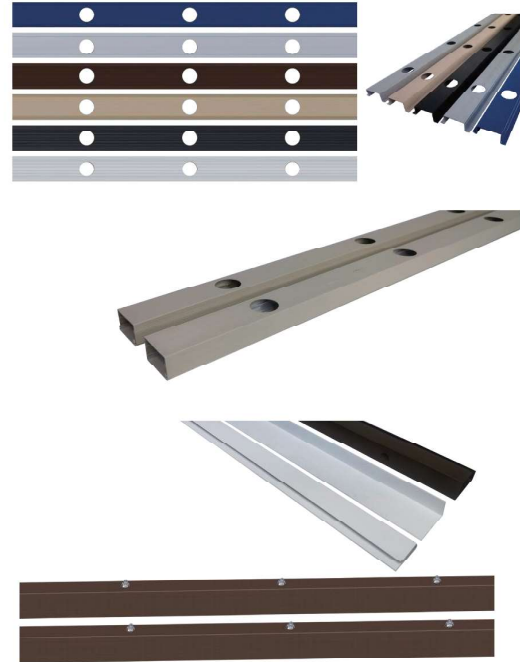
Voltage(v):DC24V  
IP Rank:IP68  
Notes:5pcs/strip



# Aluminum channel

## Customizable colors

typology: Single side point light source aluminum  
 Double side point light source aluminum  
 Raised shape point light source aluminum  
 Single side with buckle  
 Dedicated bridge rope  
 Cove lighting  
 Thickness: 0.6-1.2mm Customizable thickness  
 Size: Various sizes available Customizable sizes  
 Hole size: 20/30/40/50mm



# Glue Groove

## White/Black

**Number of modules:** 7PCS led module/M  
 10PCS led module/M  
**Assembly Instructions:** There are upper cover and lower cover.  
 Lower cover is 90 degree U-shaped or 45 degree angle V-shaped 1M rail.  
 Upper cover is 88mm long  
 Can be customized  
**Installation:** 3 M tape on back Or with screw



PROJECT:		PREPARED BY:	
PART #		QTY:	
NOTES:		DATE:	

**GL Series PERMANENT HOLIDAY LIGHTING**

## Wire Series



1ft connector



2ft connector



5ft connector



10ft connector



20ft connector



T connector with DC



T connector with two naked wires



two output

## Waterproof Case



**waterproof box with accessories**  
Power supply+Protection Circuit+Controller+Waterproof electric box



**Permanent chasing light control system**  
Power supply+Protection Circuit+Controller+Waterproof electric box



PROJECT:		PREPARED BY:	
PART #		QTY:	
NOTES:		DATE:	

**GL Series PERMANENT HOLIDAY LIGHTING**

**Power supply**



**Normal waterproof power supply**

Power (W) :30W-600W  
 Output VoltageDC:12V / 24V  
 Input VoltageAC:100-240VAC  
 Output CurrentA:1.25A-50A  
 IP Rank:IP 67



**Ming Wei Switching Power Supply**

Power (W) :15W-600W  
 Output VoltageDC:12V / 24V  
 Input VoltageAC:85-264VAC  
 Output CurrentA:0.625A-50A  
 IP Rank:N



**Non-Waterproof Switching Power Supply - Aluminum Housing**

Power (W) :120W-350W  
 Output VoltageDC:12V / 24V  
 Input VoltageAC:AC100-240V  
 Output CurrentA:5A-29.1A  
 IP Rank:N



**Non-Waterproof Power Supplies - Plastic Housing**

Power (W) :12W-120W  
 Output VoltageDC:12V  
 Input VoltageAC:AC100-240V  
 Output CurrentA:1A-10A  
 IP Rank:N



**Class 2 LED Power Supply**

Power (W) :42W  
 Output VoltageDC:12-72V  
 Input VoltageAC:AC100-240V  
 Output CurrentA:0.9A  
 IP Rank:44

PROJECT:		PREPARED BY:	
PART #		QTY:	
NOTES:		DATE:	

## LED Modules Series

LED Module Light is a very important lighting tool, because of its high efficiency, energy saving and other advantages are more and more widely used in a variety of places, including homes, office buildings, exhibition halls, supermarkets, stations, billboards and other purposes.



### GLMD124

LED Type:SMD5050 RGB

LED Qty(pcs):1LED

Voltage(V):DC12V

luminous angle:160°

electrical characteristic:constant voltage

Color:RGB

Size(mm):22\*15\*6.0mm

IP Rank:IP65

Power(W):0.72W



**GL Series PERMANENT HOLIDAY LIGHTING**

**GLMD192**

LED Type:SMD5050                      IP Rank:IP68  
 LED Qty(pcs):3LED                    Power(W):0.72W  
 Voltage(V):DC12V                    IC type:UCS1903  
 luminous angle:160°  
 electrical characteristic:Constant Current  
 Color:RGB chasing color  
 Size(mm):76\*19\*13.2mm



**GLMD129-RGBW**

LED Type:SMD5050                      IP Rank:IP65  
 LED Qty(pcs):3 LED                    Power(W):0.75W  
 Voltage(V):DC12V  
 luminous angle:120°/160°  
 electrical characteristic:constant voltage  
 Color:RGBW  
 Size(mm):64\*15.4\*6.5mm



**GLMD158**

LED Type:SMD5730                      IP Rank:IP68  
 LED Qty(pcs):3LED                    Power(W):1W  
 Voltage(V):DC12V  
 luminous angle:120°  
 electrical characteristic:constant voltage  
 Color:CW/PW/WW  
 Size(mm):73.5\*15.4\*10.8mm



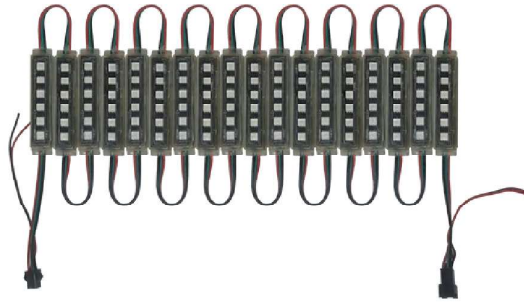
**GLMD160**

LED Type:SMD5050                      IP Rank:IP68  
 LED Qty(pcs):3 LED                    Power(W):0.72W  
 Voltage(V):DC12V                    IC type:WS2811  
 luminous angle:120°  
 electrical characteristic:constant voltage  
 Color:RGB chasing color  
 Size(mm):73.5\*15.4\*10.8mm



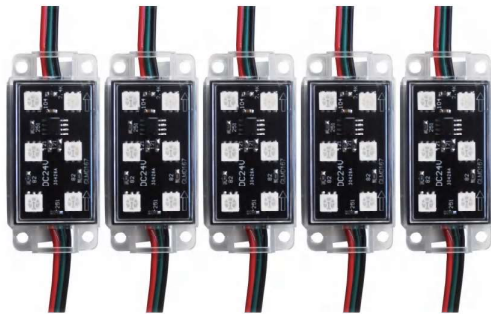
PROJECT:		PREPARED BY:	
PART #		QTY:	
NOTES:		DATE:	

**GL Series PERMANENT HOLIDAY LIGHTING**



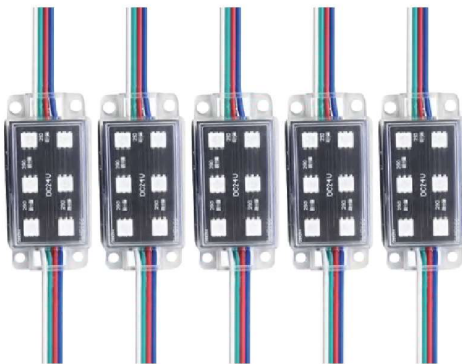
**GLMD163**

LED Type:SMD5050                      IP Rank:IP68  
 LED Qty(pcs):6LED                      Power(W):1.2W  
 Voltage(V):DC24V                      IC type:2903N  
 luminous angle:120°  
 electrical characteristic:Constant Current  
 Color:RGB chasing color  
 Size(mm):73.5\*15.4\*10.8mm



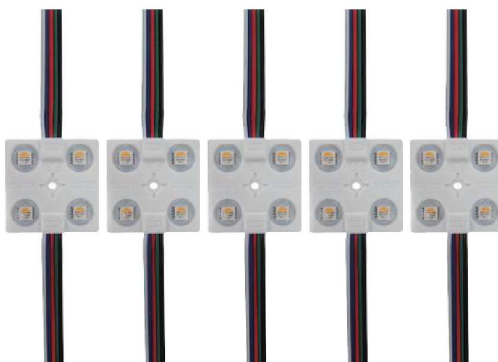
**GLMD167**

LED Type:SMD5050                      IP Rank:IP68  
 LED Qty(pcs):6LED                      Power(W):1.44W  
 Voltage(V):DC24V                      IC type:U2903N  
 luminous angle:120°  
 electrical characteristic:constant voltage  
 Color:RGB chasing color  
 Size(mm):60\*28.3\*10.6mm



**GLMD166**

LED Type:SMD5050                      IP Rank:IP68  
 LED Qty(pcs):6LED                      Power(W):1.44W  
 Voltage(V):DC24V  
 luminous angle:120°  
 electrical characteristic:cconstant voltage  
 Color:RGB  
 Size(mm):60\*28.3\*10.6mm



**GLMD151**

LED Type:SMD5050RGBW              IP Rank:IP65  
 LED Qty(pcs):4LED                      Power(W):1.5W  
 Voltage(V):DC12V  
 luminous angle:120°/160°  
 electrical characteristic:constant voltage  
 Color:RGBW  
 Size(mm):36\*36\*4.8mm