

PROJECT:		PREPARED BY:	
PART #		QTY:	
NOTES:		DATE:	

**GC Series 4 BAY HIGH BAY LIGHT**



PROJECT:		PREPARED BY:	
PART #		QTY:	
NOTES:		DATE:	

## GC Series 4 BAY HIGH BAY LIGHT



### Parameter

<b>WATTAGE</b>	100/150/200/240/300/400/480W
<b>LAMP LUMINOUS FLUX</b>	160LM/W±5%
<b>CRI</b>	Ra>70/80
<b>CCT</b>	2700-6500K
<b>RATED VOLTAGE</b>	AC 90-305V, 50/60Hz
<b>POWER FACTOR</b>	>0.95
<b>BEAM ANGLE</b>	60°/120°(100/150/200/240W) 30°/60°/90°/120°(300/400/480W)
<b>IP GRADE</b>	IP65
<b>HEAT-SINK</b>	ALUMINIUM COOLING FIN ALUMINIUM RIVET
<b>OPERATING TEMP</b>	-40℃~60℃



#### 100W

16,000LM±5%  
4.5kg±5%  
429×429×159mm

#### 150W

24,000LM±5%  
4.5kg±5%  
429×429×159mm

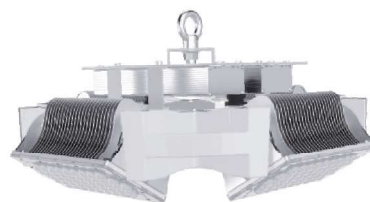


#### 200W

32,000LM±5%  
5.3kg±5%  
429×429×159mm

#### 240W

38,400LM±5%  
5.3kg±5%  
429×429×159mm



#### 300W

48,000LM±5%  
7.1kg±5%  
429×429×225mm

#### 400W

64,000LM±5%  
7.4kg±5%  
429×429×225mm

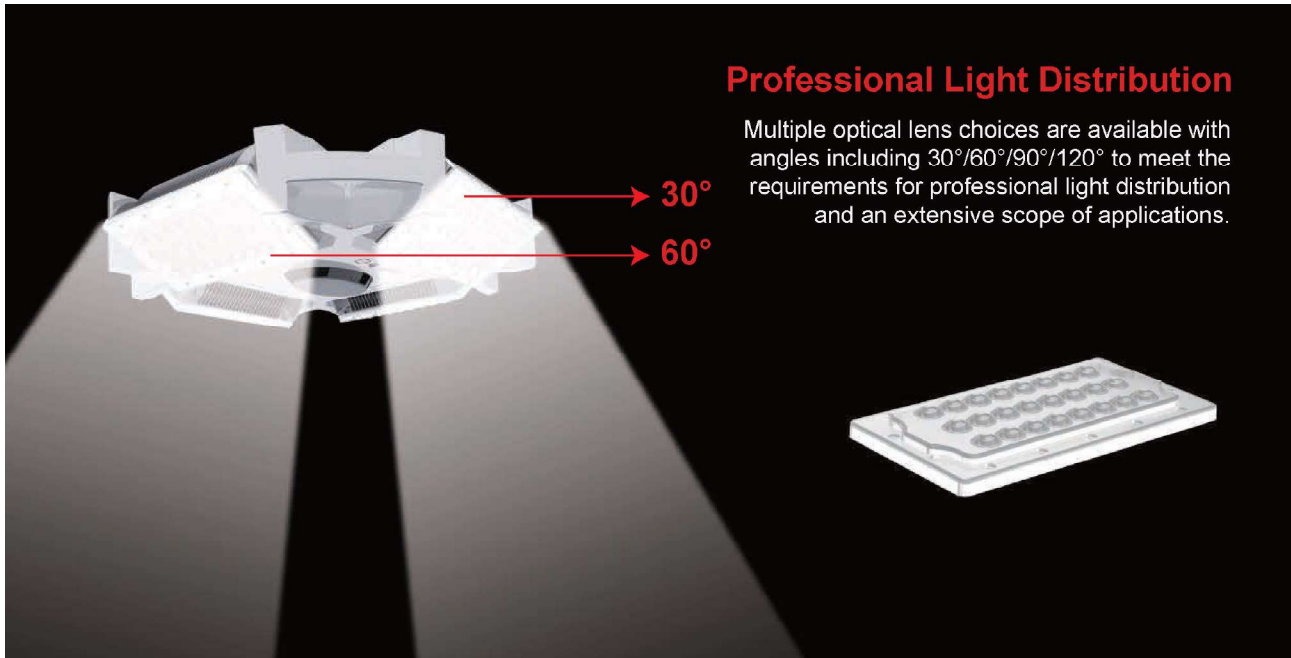
#### 480W

76,800LM±5%  
7.4kg±5%  
429×429×225mm



PROJECT:		PREPARED BY:	
PART #		QTY:	
NOTES:		DATE:	

**GC Series 4 BAY HIGH BAY LIGHT**



- Ultralight
- Module Rotatable 200°
- High Luminous Flux
- Installation & Maintenance Friendly

**Build-In sensor**

- Microwave Sensor
- Microwave Sensor Dimming
- Dimming Remote Control Microwave Sensor



**Original Design Heat-Sink**



Aluminium Rivet



Aluminium Cooling Fin

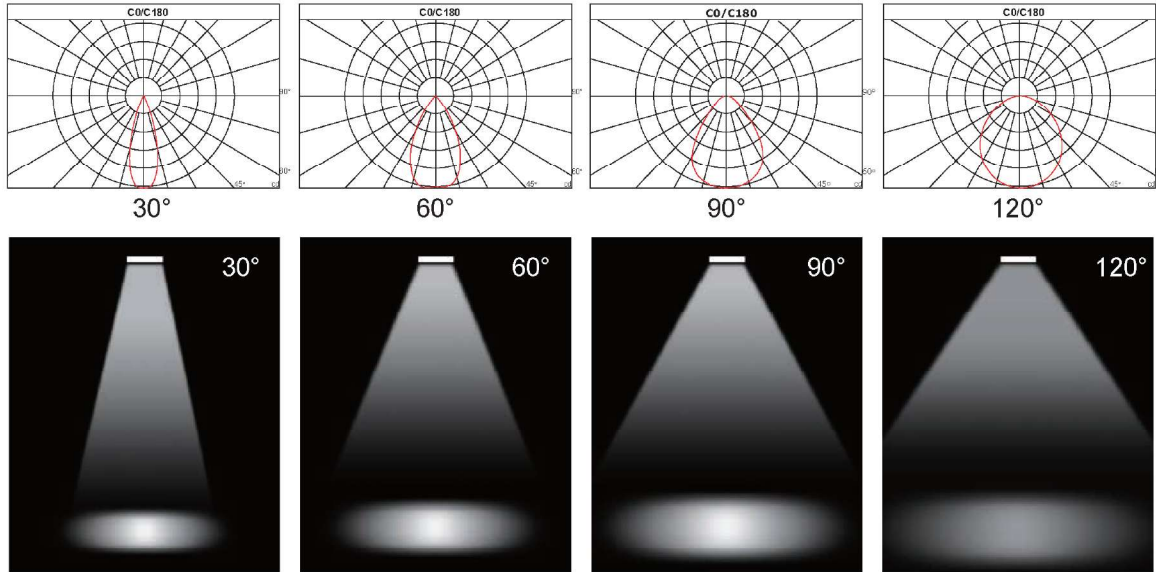


Aluminium Cooling Fin

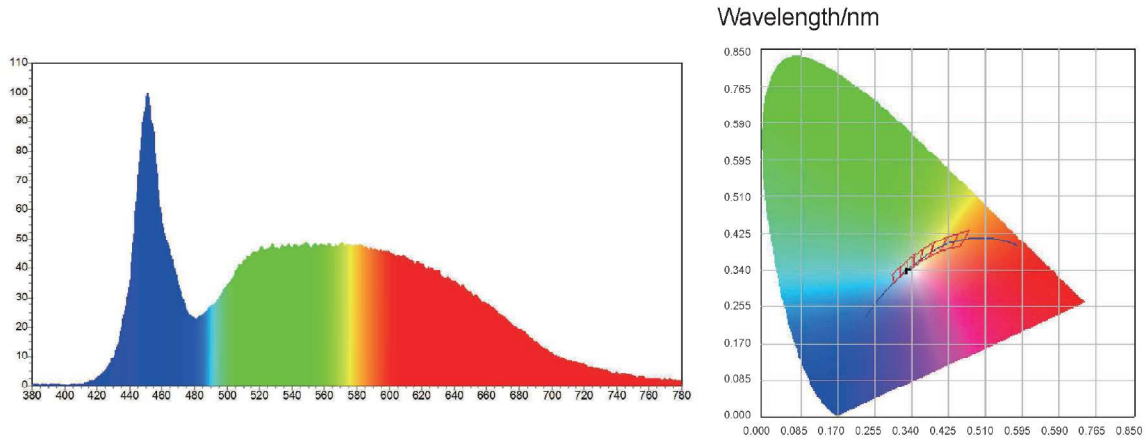


## GC Series 4 BAY HIGH BAY LIGHT

### Light Distribution Curve



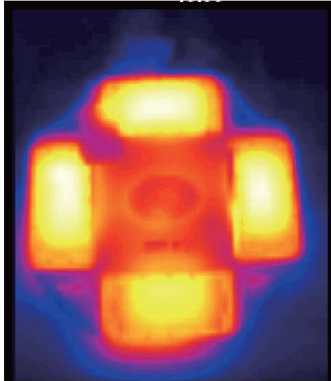
### Integrating sphere test report CO-4BAY-200W-5000K



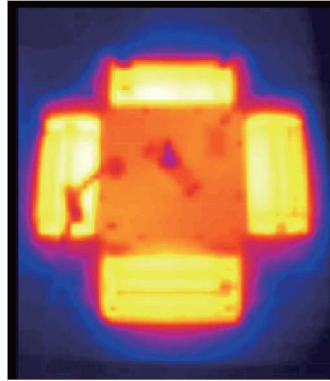
Spectrum		Electrical			
WD:	551.5 nm	I(test):	907.6 mA		
WP:	451.3 nm	V:	220.80 V		
HW:	21.0 nm	Flux:	32156.184 lm		
R%:	31.2	P:	160.460 lm/w		
G%:	41.0	P:	15776.76mw		
B%:	27.8	VP:200.400W	PF: 0.9610		
CIE(x,y):	0.3327 , 0.3433	R1: 31.2	R2: 87.2	R3: 88.9	
CIE(u,v):	0.2062 , 0.3191	R4: 90.0	R5: 87.1	R6: 87.4	
Ra:	85.1	R7: 89.9	R8: 85.6	R9: 55.7	
DUUV:	0.0010	R10: 82.1	R11: 91.5	R12: 62.3	
CCT:	5488 K	R13: 88.3	R14: 96.2	R15: 89.8	



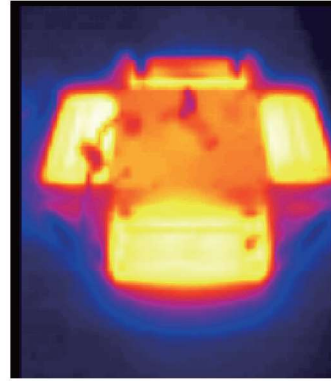
## Temperature Rising Report



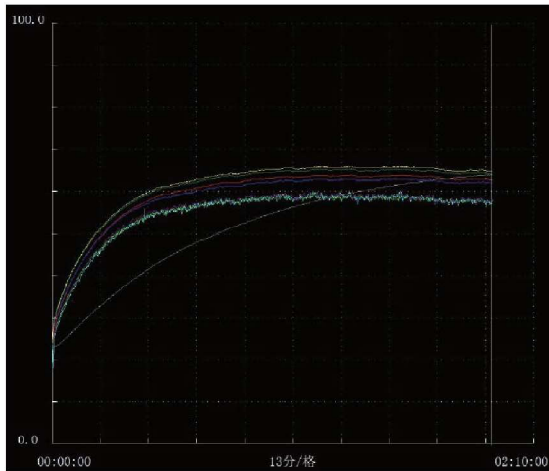
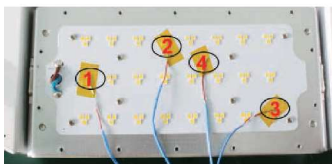
Front



Back



Overall



- █ CH1 TJ
- █ CH2 TJ
- █ CH3 TJ
- █ CH4 PCB Board
- █ CH5 Heat Sink
- █ CH6 Heat Sink
- █ CH7 Heat Sink
- █ CH8 LED Driver

TIME(min)	0:00:00	0:30:00	1:00:00	1:30:00	2:00:00
CH1 TJ	24.2	59.4	63.2	63.8	62.6
CH2 TJ	24.2	61	64.6	65	63.9
CH3 TJ	24.1	58.7	62.3	63.1	61.8
CH4 PCB Board	24.1	61.4	65.1	65.8	64.6
CH5 Heat Sink	24	55.8	59	58.3	56.1
CH6 Heat Sink	24.1	55.3	59.3	58.4	57
CH7 Heat Sink	24	55.9	59.1	59.1	56.5
CH8 LED Driver	23.2	43.8	55.1	61.2	64.1

PROJECT:		PREPARED BY:	
PART #:		QTY:	
NOTES:		DATE:	

**GC Series 4 BAY HIGH BAY LIGHT**

